

As Radiologists we are in the responsibility to integrate both, technical implementation of basic science, and clinical patient care, in our daily work. And to do so by maintaining highest medical quality standards while carefully utilizing the available health care resources.

We cordially invite You to the
**February 2020 advanced EMRI
Erasmus Course on:
Musculoskeletal MRI of the Joints**
(From Finger to Toe) in Essen
(Germany).

The Course combines formal **lectures** with **interactive teaching** in **small groups** guided by a renowned **international faculty with recognized experts** in the field. It will provide specific knowledge on joint anatomy and pathology, their therapeutic relevance and what we need to do to achieve a clinically useful diagnosis. The program will also integrate post-operative imaging and strategies how to efficiently obtain good image quality.

Hosting this upcoming course, **Essen** is a **World Heritage Site**, for it illustrates and still is an integral part of the industrial evolution in Europe. The very location of the course is tied to one of the biggest enterprises of the steel industry, the Zeche Zollverein and Red Dot Museum are excellent examples of how past and present can be united and create new perspectives.

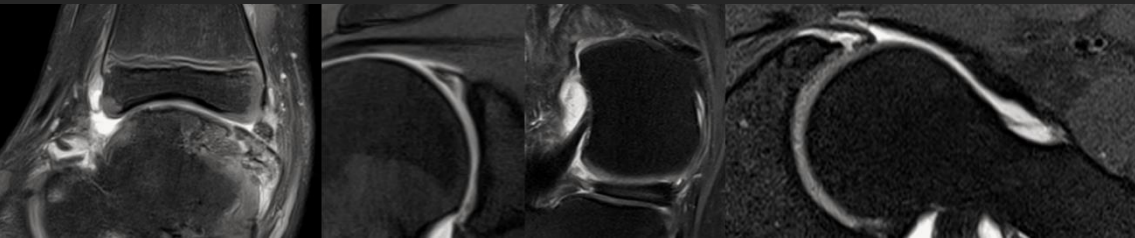
We are looking forward
to welcome You
in **Essen next February!**



EMRI Erasmus Course

Musculoskeletal MRI:
Joints - from Finger to Toe

February, 3-7; 2020
Essen (Germany)



International Faculty + Interactive Teaching + Small Groups

Course Organizers: C. Glaser, S. Waldt (DE)

Module Coordinators: M. Shahabpour (BE), H. Bloem (NL),
M. Davies (GB), H. Imhoff (AT)

Course Venue: Alfried Krupp Krankenhaus Rüttenscheid
Alfried-Krupp-Straße 21
D-45131 Essen

Contact: Prof. Christian Glaser, Mrs Yvonne Hollmer

Email: yvonne@holmer-wor.de

Website: www.emricourse.org

Registration: www.emricourse.org, open from March 11, 2019

